



# BioSign® Flu A + B

An in vitro rapid qualitative test that detects influenza type A and type B antigens directly from nasal swab, nasopharyngeal swab and nasal aspirate/wash specimens\*

**CLIA  
WAIVED**  
FOR SWAB  
SPECIMENS

*Differentiates between  
Influenza A and B*

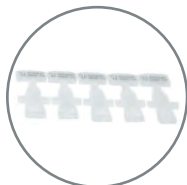
## INCLUDES:



**POSITIVE AND  
NEGATIVE CONTROL  
SWABS**



**INNOVATIVE FLIP  
DESIGN WITH  
ONBOARD SAMPLE  
EXTRACTION**

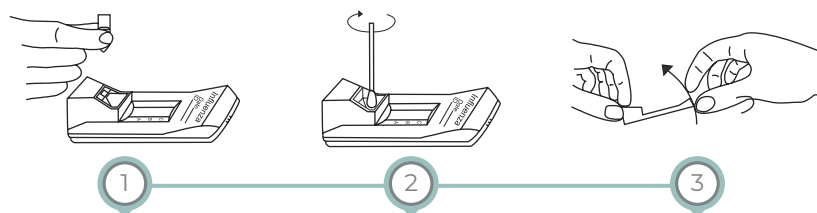


**PRE-MEASURED  
DEVELOPER SOLUTION  
CAPSULE** for increased  
accuracy and ease of use



**FLOCKED NASAL SWABS**  
for improved patient  
comfort and superior  
specimen collection

## SIMPLE PROCEDURE<sup>1</sup> FOR SWAB SPECIMENS



### EXTRACT

Fill extraction  
well with  
reagent.

### INCUBATE

Insert collection  
swab and incubate  
for 1 minute.

### FLIP

Tip device for 1-2  
seconds allowing  
liquid to flow.

**READ RESULTS IN 10 TO 15 MINUTES.**

## READING RESULTS<sup>1</sup>

VALID TEST RESULTS				INVALID TEST RESULTS		
NEGATIVE	POSITIVE	POSITIVE	POSITIVE	INVALID	INVALID	INVALID
	A LINE: Influenza type A	B LINE: Influenza type B	A & B LINE: Influenza type A & B	Repeat with new sample and device.		

## PROVEN CLINICAL PERFORMANCE (BioSign® Flu A & B vs, PCR)

	INFLUENZA A	INFLUENZA B
<b>POSITIVE % AGREEMENT</b>	89.2% (95% CI:83.0-93.4%)	86.4% (95% CI:80.1-90.9%)
<b>NEGATIVE % AGREEMENT</b>	99.4% (95% CI:97.7-99.8%)	99.0% (95% CI:97.1-97.7%)

BioSign® Flu A + B, 25 tests/kit, REF #BSP-510-25

CPT CODE: Influenza A 87084QW.....Reimbursement \$15.39<sup>2</sup>  
Influenza B 87084QW-59.....Reimbursement \$15.39<sup>2</sup>

**THE TESTS YOU WANT.  
THE ACCURACY YOU NEED!**

**DISTRIBUTED BY:**

[www.germainelabs.com](http://www.germainelabs.com)

**GERMAINE**  
LABORATORIES, INC.



800.854.8446

210.692.4192



210.692.4198 Fax

©2019 Germaine Laboratories, Inc., CSM 0800-31, Rev. 01-19  
\* CPT reimbursements vary, check your state for current amounts

<sup>1</sup> See Package Insert for complete details.  
<sup>2</sup> Check with each state for exact reimbursement.  
• Nasal Aspirate Specimens - Not CLIA WAIVED.

